

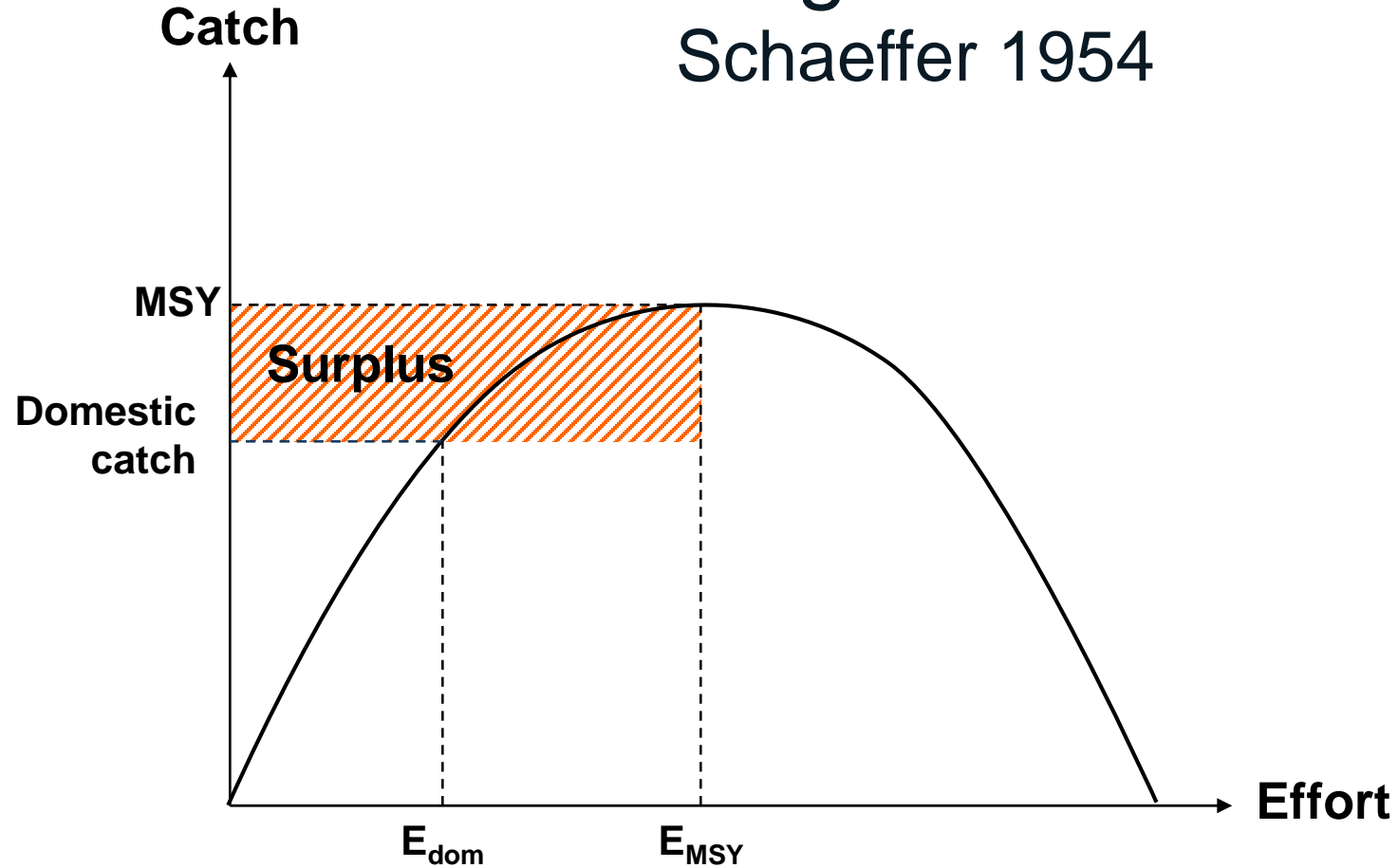
MESSH

Round table 2 :

Complexity in bio-economics of
marine fisheries

**MSY = the perfect simple-optimal tool to
manage fisheries**

Schaeffer 1954



Ecosystem Approach to Fisheries (EAF): Reconciling exploitation and conservation of marine species in a context of climate change

(Worm et al science 2009)

Maintaining biodiversity



Maintaining high catch



Maintaining high employment



Reducing Fossil energy

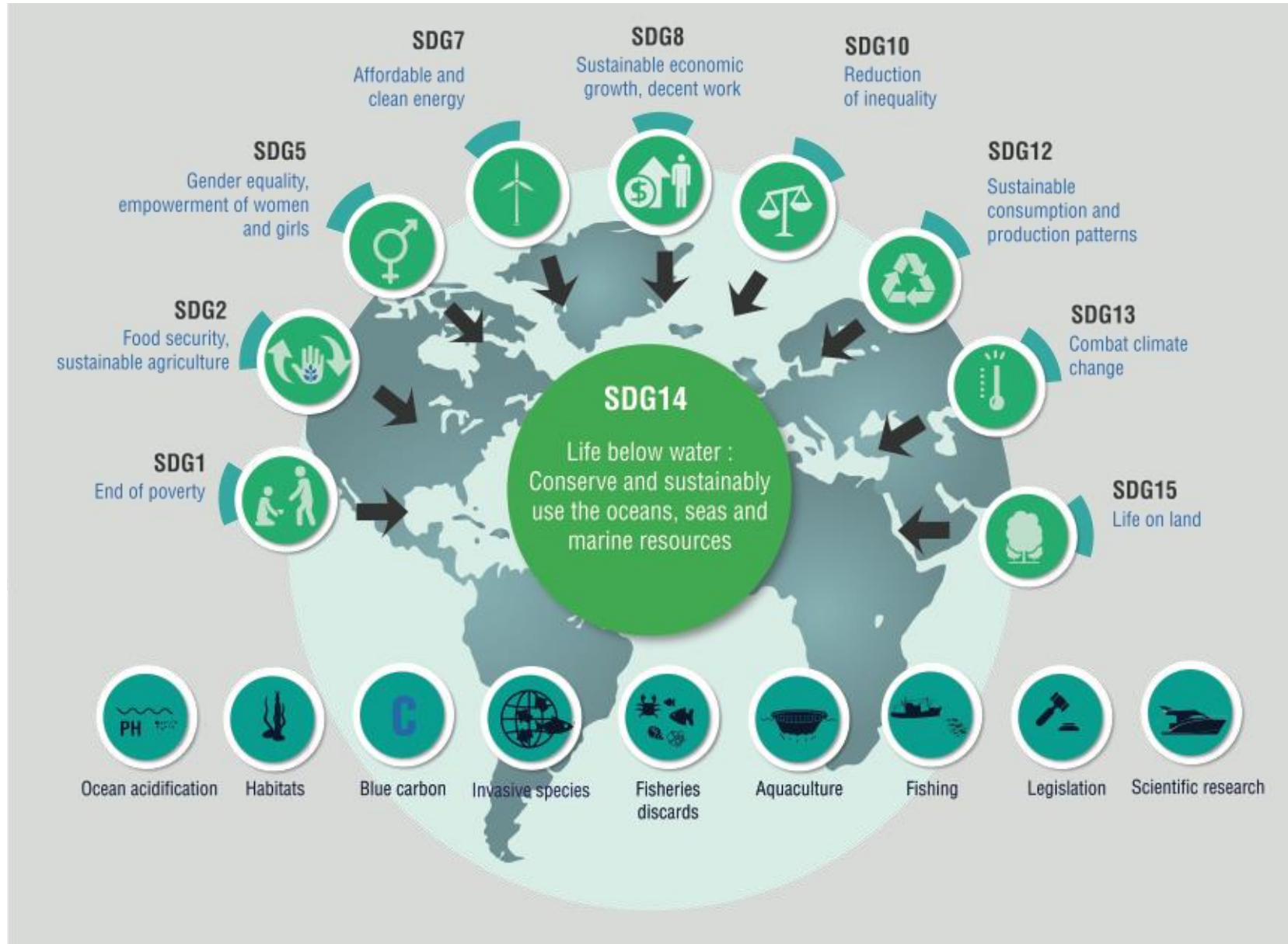


Agenda 2030 of the UN defines sustainability today



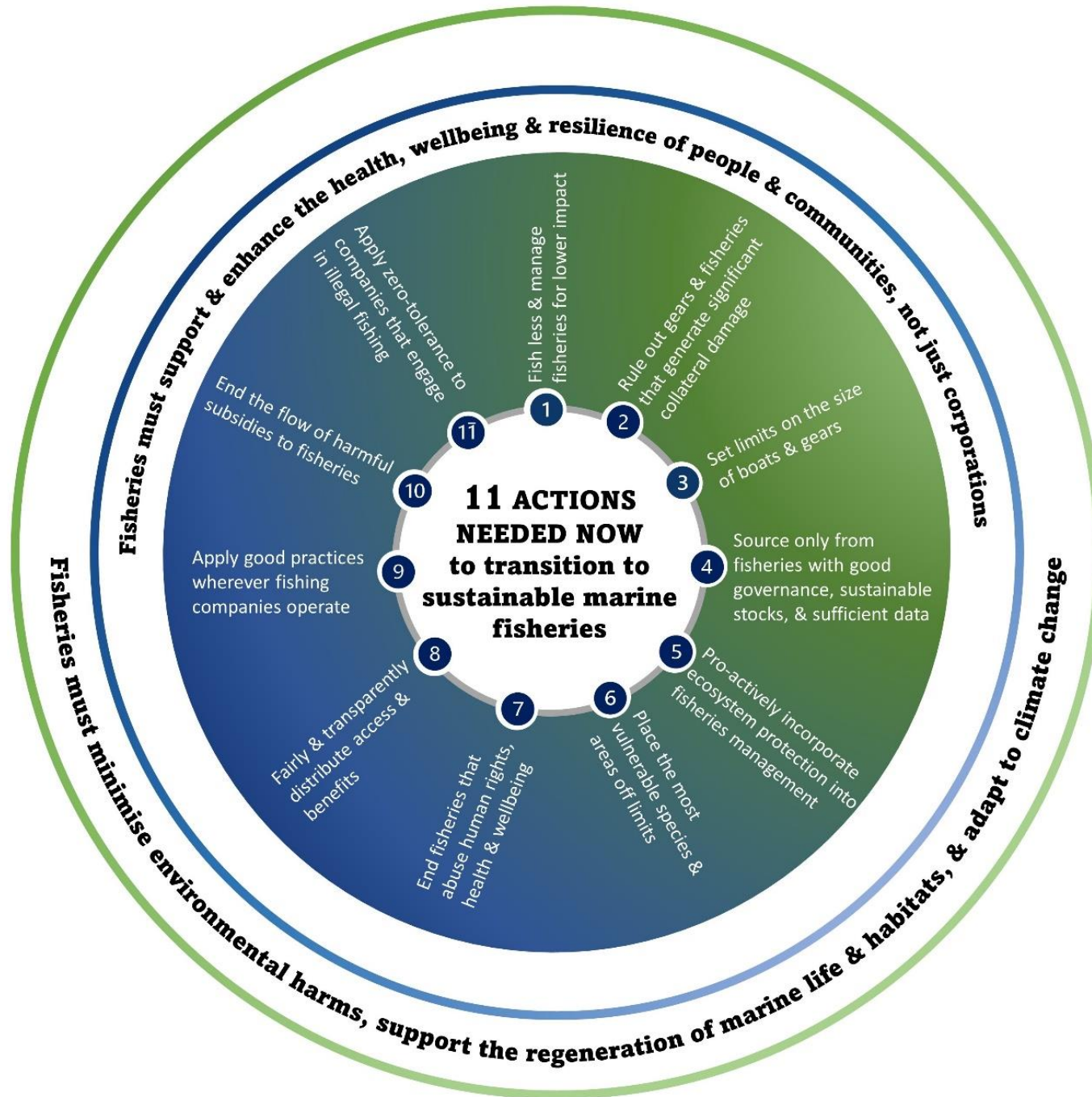
Studying the interactions, synergies et compromises between the SDGs

(Moatti - Cury 2017 , GSDR 2019)



MESSH: Complexity in bio-economics of marine fisheries

1. Do we need more complex models to solve current issues and coming challenges?
2. What are the main challenges that bioeconomic models can solve?
3. How to improve integrated and complex bioeconomic models?



A Future for fisheries

(Roberts et al 2024 in press)